

WOLD
Construction

North Humberside Forest Rally

**Voted best BTRDA Rally of 2004*

Round three of the

Silverstone Competition Tyres **BTRDA Rally Series**

Incorporating the:

Silverstone Tyres Gold Star® Championship
Silverstone Tyres Silver Star® Championship

FUCHS **Silkolene**
1400 Championship

Holpak PACKAGED
PUMPSSETS
TEAM CHALLENGE



Saturday 2 April 2005

Also a round of the:

BTRDA English Rally Challenge



**ANCC Northern Stage
Rally Championship**

**The Competition Car Insurance
EMAMC
Stage Rally Championship**

**The Roadrunner Phoenix Awards
ANEMMC
Stage Rally Championship**



REGULATIONS





The SILVERSTONE COMPETITION TYRES BTRDA Rally Series provides maximum opportunity for all competitors to take part in the UK's most popular Rally Championships

The BTRDA Rally Series includes:-

- ✓ **SILVERSTONE TYRES GOLD STAR® Championship** - open to all vehicles over 1400cc
- ✓ **SILVERSTONE TYRES SILVER STAR® Championship** - for all 2 wheel drive cars over 1400cc
- ✓ **SILKOLENE 1400 Championship** - for cars up to 1400cc, running in advance of the main field with N1, A5 and B9 classes

Competitors choose from a selection of the 10 best National B forest events with the **best 6 scores** [from first 9 starts] counting to a final points total. New for 2005 is the **BTRDA English Rally Challenge*** that will be fought out over the six English based events in the Championship

Event	Date	Location	Host Town
Wyedean Forest Rally*	12 th Feb	Forest of Dean	Chepstow
Malcolm Wilson Rally*	5 th March	Lake District	Cockermouth
North Humberside Forest Rally*	2 nd April	North Yorkshire	Willerby, Nr Hull
Somerset Stages*	23 rd April	West Somerset	Minehead
Red Dragon Rally	21 st May	South Wales	Swansea
The Dukeries Rally*	18 th June	Sherwood Forest	Mansfield
Quinton Stages Rally	9 th July	Mid Wales	Llandovery
Woodpecker Stages*	3 rd Sept	Shropshire & Welsh Borders	Ludlow
Plains Rally	24 th Sept	West Wales	Welshpool
Cambrian Rally	5 th Nov	North Wales	Llandudno

There is the free to enter **Holpak Team Challenge** plus **Competition Car Insurance Improvers Awards** and **Mintex** and **Silkolene** bonus schemes. Championship registration [including BTRDA Club membership] is just £40 for drivers and £35 for co-drivers. Free for under 21's in their first year with BTRDA.

There are **10 vehicle classes** plus the very competitive **BTRDA Production Cup** and the UK entry-level **Super 1600 Challenge** open to all homologated cars up to 1600cc.

- Class N1 Group N up to and including 1400cc
- Class N3 Group N over 1400cc up to and including 2000cc
- Class N4 Group N over 2000cc
- Class A5 Group A up to and including 1400cc
- Class A6 Group A over 1400cc up to and including 1600cc

All other vehicles that comply with the 2005 MSA Technical Regulations

- Class B9 Up to and including 1400cc
- Class B10 Over 1400cc up to and including 1600cc
- Class B11 Over 1600cc up to and including 2000cc
- Class B12 Over 2000cc two wheel drive
- Class B13 Over 2000cc four wheel drive

Engine capacities are after multiplying the capacity by a forced induction equivalency factor of 1.7. (Not Diesels)

TCS Rally Results and the RalliTrak Competitor Safety Radio system are integral to each event and Subjective Route Notes will be available from Brian Patterson. The Championship web site www.btrdarally.com is the place for Live Event Results, Championship Points and the latest Championship News. More information from Howard Wilcock at howard@btrdarally.com Tel: 0115 9665176

BTRDA – Promoting Affordable Motorsport

Sponsors' Foreword

Wold Construction Company Limited is pleased to have been invited to sponsor The North Humberside Forest Rally 2005. We understand that this rally, which is organised very professionally by The North Humberside Motor Club Limited, has been firmly established as one of the premier motor sport events in the North of England.

Wold Construction Company Limited has been associated with sponsoring various sports events and teams over the last few years although this is our first venture into motor sport. We hope to continue our association with this event.

We are sure that you will enjoy your day and wish all competitors good luck and a safe competition.

Brian Auchterlounie
Director
Wold Construction Company Limited

PREVIOUS WINNERS OF THIS EVENT

2004	Barry Johnson and Stewart Merry	Subaru Impreza
2003	Andy Burton and Rob Morgan	Peugeot Cosworth
2002	Warren Philiskirk and Eurig Evans	MG Metro 6R4
2001	Rally cancelled - foot and mouth disease	
2000	Warren Philiskirk and Eurig Evans	MG Metro 6R4
1999	Warren Philiskirk and Eurig Evans	MG Metro 6R4
1998	Jimmy Paterson and Steve Harris	Subaru Impreza
1997	Warren Philiskirk and Eurig Evans	MG Metro 6R4
1996	Matthew Clark and Robert Dyson	Escort Cosworth
1995	Brian Lyall and Neil Ewing	Escort Cosworth
1994	Adrian Struthers and Graham Law	Escort RS
1993	Steve Petch and Peter Croft	Escort Cosworth
1992	Neil Hiorns and Paul Hirst	Sierra
1991	Steve Bannister and Julie Stephenson	Escort
1990	Nick Elliot and Dave Price	Escort
1989	Steve Bannister and Dave Oldfield	Escort
1988	Steve Bannister and Dave Oldfield	Escort
1987	Steve Bannister and Dave Oldfield	Escort

Cover photograph from an original by Mark Writtle (<http://www.writtlephotographic.co.uk/>)

Cover design by Alan Gilbert (webmaster@NorthHumbersideMotorClub.co.uk)

List of Officials

(Please do not telephone any of the Organisers after 10pm)

MSA Steward	W. S. Troughear
Club Stewards.....	R. K. Parkin, J. H. Richardson
Clerk of the Course.....	Ian James (MSA National A) East End House, Spaldington, Goole, East Yorkshire, DN14 7NJ (01430) 430570 (after 7pm) Email: Ian.James@NorthHumbersideForestRally.org.uk
Deputy Clerk of the Course and Chief Timekeeper	David James (MSA National A) (01262) 606420 (after 7pm) Email: david@NorthHumbersideForestRally.org.uk
Secretary of the Meeting.....	Ian Sadofsky 76 Corby Park, North Ferriby, East Yorks, HU14 3BA (01482) 635404 (after 7pm), 07802 219461 Email: secretary@NorthHumbersideForestRally.org.uk
Assistant Clerks of the Course.....	Rob White 07901 710439 (after 7pm) Graham Hardwick (01759) 306706 (after 7pm) Steve Varey (01482) 876641 Dennis Webster (01482) 812755
Staffing Officer/Chief Marshal	Steve R Smith 159 Church Street, Whitby, North Yorkshire, YO22 4AS (01947) 821862 Email: marshals@NorthHumbersideForestRally.org.uk
Deputy Chief Timekeeper.....	Richard Blackshaw (MSA National A)
Competitor Liaison Officer.....	Lyn Jenkins (07974 432788) Email: clo@NorthHumbersideForestRally.org.uk
Area Coordinator (Hull).....	David Cogan
Safety Officer	Robin Beagle (01482) 501265
Assistant Safety Officer	Trevor Davies (01482) 847092
Entries Secretariat.....	Alan Carvell and Cynthia Mumby 20 Badgers Wood, Park Lane, Cottingham, East Yorkshire, HU16 5ST (01482) 840756 Email: entries@NorthHumbersideForestRally.org.uk
Chief Scrutineer	Jim Kilmartin (MSA National A)
BTRDA Rally Series Scrutineer.....	Dave Boyles (MSA National A)
Scrutineers	Dave Cowie (MSA National B) Tom Watson (MSA National A)
Environmental Scrutineers.....	Anne Watson, Jim Kilmartin
Chief Medical Officer.....	Dr Mark Haworth
Radio Controller	Chrys Worboys, Mercury Radio
Public Relations Officer.....	David Shipley
Press & Publicity.....	Andrew Haill PO Box 1445 Sutton Coldfield, West Midlands, B76 1WW 0121 313 1416; fax 0121 313 1105 Email: andrew.haill@btconnect.com
Results	Tynemouth Computer Services
Recovery Co-ordinator.....	John B. Richardson
Website	http://www.NorthHumbersideForestRally.org.uk/

Organisers' Foreword

Welcome to the Wold Construction North Humberside Forest Rally 2005.

This event was awarded The Bill Turner Trophy for the Best Event in the BTRDA Rally Series in 2004.

This year the event is again a round of the Silverstone Competition Tyres BTRDA Rally Series incorporating the Silverstone Tyres Gold Star[®] Championship, the Silverstone Tyres Silver Star[®] Championship and the Silkolene 1400 Championship, and three regional association championships: the Roadrunner Phoenix Awards ANEMMC Stage Rally Championship, the Competition Car Insurance EMAMC Stage Rally Championship, and the Kent Cams ANCC Northern Stage Rally Championship.

For the first time we are providing an on-line entry form on the event's website.

As in previous years the Silverstone Competition Tyres BTRDA Rally Series runs all cars under 1400 cc at the front of the field. There will be two historic classes: one for up to 1400 cc and one for over 1400 cc. Each class covers both historic and post-historic. In particular we hope that owners of historic Minis, Imps, and Midgets, for example, will take advantage of being able to run at the front of the field competing against themselves and modern rally cars. We also extend a welcome to larger-engined historics although they will not be able to run at the front of the field.

The event Headquarters and start remains at the Ramada Hull Hotel in Willerby to the west of Hull. The hotel is at the edge of the city and there have been very few traffic problems in the last four years. Scrutineering and noise test will be to the west of Hull off the main M62/A63 feeder road.

The entry fee is £360. Once again the organisers are supporting Airwaves' initiative with the RalliTrak positive reporting system for competing car locations within stages. The provision of this service, which the event and Silverstone Competition Tyres BTRDA Rally Series organisers believe is one way forward in improving safety cover on stages, costs £20 per competing crew. This is included in the £360 total entry fee. As in previous years the entry fee may be paid by instalments. Our stages remain in the classic North Yorkshire Forests.

We are trying to reward the hard-working Marshals and ask you to support them by a donation either on the entry form or at documentation. This is entirely voluntary and you will receive a "smiley sticker" for your windscreen for every £5. Our aim is to provide every marshal with a memento.

The organisers have arranged a deal with the Ramada Hull Hotel which will be Rally Headquarters and the venue for the awards presentation. Details can be found on the enclosed booking form which should be returned only to the address shown on the form to secure these attractive rates on a first-come, first-served basis.

For those remaining behind on Saturday, the hotel has a leisure centre open to residents, Kingston upon Hull has seven museums, the Deep, two shopping centres, and arguably the best art gallery in the North of England, whilst Beverley offers Beverley Minster.

Finally, the best of luck to all competitors on the day.

The Organisers



Specialists in Motorsport Communications

Supporters Of The
RalliTrak System

- Kall Kwik Forest Rally
- Jim Clark Memorial Rally
- Dukeries Stages Rally
- North Humberside Forest Rally
- Trackrod Rally Yorkshire
- Ulster Rally
- RalliTrak Premier Stages
- Malcolm Wilson Rally
- Premier Stages Rally
- THE 2004 BTRDA Rally Championship

■ *Your Clubs Next Rally ???*

Creators Of

RalliTrak

**Positive
Competitor
Tracking System**
Rallyings answer to
999

In Use On This Event

Tel 01977 679864

Pete.Baker@RalliTrak.com

Airwaves Radio Communications and **RalliTrak** are pleased to be associated with the **Wold Construction North Humberside Forest Rally**

Contents

Sponsors' Foreword.....	1
List of Officials.....	2
Organisers' Foreword.....	3
Contents.....	5
Rally Timetable.....	7
1. ANNOUNCEMENT.....	9
2. JURISDICTION.....	9
3. PERMIT.....	9
4. ELIGIBILITY.....	9
5. LICENCES.....	9
6. CHAMPIONSHIPS.....	9
7. PROGRAMME.....	11
8. ROUTE.....	11
9. CLASSES.....	11
10. AWARDS.....	13
11. ENTRIES (Fees and Methods of Payment).....	13
12. ENTRIES SECRETARY.....	14
13. ENTRIES (Acceptance).....	14
14. OFFICIALS.....	14
15. RESULTS.....	14
16. PROTESTS.....	14
17. SCRUTINEERING, DOCUMENTATION AND SIGNING ON.....	15
18. CONTROLS AND TIMING.....	15
19. IDENTIFICATION.....	17
20. SUMMARY OF PENALTIES.....	19
21. GENERAL REGULATIONS.....	19
22. MEDICAL ASSISTANCE/SAFETY.....	19
23. PACE NOTES AND SUBJECTIVE ROUTE NOTES.....	21
24. SERVICING.....	21
25. DAMAGE DECLARATION.....	22
26. JUDGES OF FACT.....	22
27. DRIVING STANDARDS OBSERVERS.....	22
28. EVENT CANCELLATION.....	23
29. CANCELLATION OF STAGES.....	23
30. INSURANCE.....	23
31. ADDITIONAL INFORMATION.....	23
32. ACKNOWLEDGEMENTS.....	24
33. NORTH HUMBERSIDE MOTOR CLUB.....	24
34. CHAMPIONSHIP CO-ORDINATORS.....	24



TRIED & TESTED TECHNOLOGY



Europes No1



**THE
POWER
TO WIN!**



www.kentcams.com

Units 1-7 Military Road, Shorncliffe Ind. Est. Folkestone, Kent CT20 3SP

Tel: 01303 248666 Fax: 01303 252508

Email: info@kentcams.com

Rally Timetable

Saturday	12 th March	18:00	Reservation of entries for BTRDA championship contenders ends
Saturday	19 th March	18:00	Entries payable by 2 instalments close (see SR11); Entries at standard fee close
Tuesday	29 th March	18:00	Entries at increased fee and management plate applications close
Tuesday	29 th March	19:45	Final Instructions and route information posted to entries received by 15 th March
Wednesday	30 th March	19:45	Final Instructions and details of how to collect route information posted to entries received between 15 th March and 23 rd March
Friday	1 st April	15:00 - 21:30	Noise/Scrutineering
		15:00 - 21:40	Documentation
Saturday	2 nd April	08:01	First car starts
		17:00 (approx)	First car finishes
		19:30	Provisional Results published at the Ramada Hull Hotel, Willerby (subject to official delay)
		20:15	Awards Presentation at the Ramada Hull Hotel, Willerby (subject to official delay)
Sunday	3 rd April		Final Results mailed


Phoenix Awards

SPECIALISTS IN MOTORSPORT TROPHIES
Medals, Cups, Shields, Badges, Traditional Trophies
promotional gifts and engraving service
all this at the keenest prices around

Displays brought to your club
Free Catalogue on Request



John & Sandra Hickling
18 Philip Avenue, Nuthall, Nottingham, NG16 1EA

 **0115 9384601 Fax: 0115 8544269**
07831 856537 (J) / 07977 834757 (S)
email: john.hickling1@ntlworld.com

North Humberside Motor Club Limited

Wold Construction North Humberside Forest Rally 2005

1. ANNOUNCEMENT

The North Humberside Motor Club Limited will organise a National B Permit Special Stage Rally on Saturday 2nd April 2005. The event will start from the Ramada Hull Hotel, Willerby, East Yorkshire.

2. JURISDICTION

The meeting will be held under the General Regulations of the Motor Sports Association Limited (incorporating the provisions of the International Sporting Code of the FIA), these Supplementary Regulations and any written instructions that the Organisers may issue for the event.

This is a Target Timing event (GR K30).

3. PERMIT

MSA Permit number (tba) has been allocated.

DOE Authorisation number (tba) has been allocated.

Championship permit numbers are shown in SR6.

4. ELIGIBILITY

The event is open to:

- a) Registered Contenders in the Competition Car Insurance EMAMC Stage Rally Championship,
- b) Registered Contenders in the Roadrunner Phoenix Awards ANEMMC Stage Rally Championship,
- c) Registered Contenders in the Kent Cams ANCC Northern Stage Rally Championship,
- d) All fully elected members of the Organising Club,
- e) All fully elected members of the following clubs:
Airedale & Pennine M.C., Alwoodley M.C., Beverley & D.M.C., British Trials and Rally Drivers Association, De Lacy M.C., Dukeries M.C., Historic Rally Car Register, Ilkley & D.M.C., Keighley & D.M.C., Lincs Louth M.C., Malton M.C., Northallerton A.C., Ripon M.S. C., Selby & D.M.C., Sheffield & Hallamshire M.C., Slaithwaite M.C., Trackrod M.C., Wakefield & D.M.S.C., Whitby & D.M.C., York M.C., Yorkshire Sports C.C.

5. LICENCES

All competitors and drivers must produce a valid 2005 Competition Licence, Club Membership Card (GR K6.1.4(a)) and, where applicable, an Entrant's Licence, and Championship Registration Card(s).

6. CHAMPIONSHIPS

The event is a round of the following Championships:

- a) the Silverstone Competition Tyres BTRDA Rally Series incorporating the Silverstone Tyres Gold Star[®] Championship, the Silverstone Tyres Silver Star[®] Championship, and Silkolene 1400 Championship (Permit 2005/5350),
- b) the Competition Car Insurance EMAMC Stage Rally Championship (Registration no 48/2005),
- c) the Roadrunner Phoenix Awards ANEMMC Stage Rally Championship (Registration no 46/2005),
- d) the Kent Cams ANCC Northern Stage Rally Championship (Registration no 28/2005).

Roadrunner MOTORSPORT



Specialists In

**Sponsors Of The
A.N.E.M.M.C. Stage
Rally Championships**

Exhausts • Brakes • Air Filters • Suspension

Mail Order: 0115 978 1173



Fax: 0115 942 3054
email: sales@roadrunnermotorsport.co.uk
www.roadrunnermotorsport.co.uk

Mon -Fri 9.00am-5.30pm
Sat -9.00am-4.00pm Sun -Closed

379 Nuthall Road, Aspley, Nottingham NG8 5BU
Directions: M1 Junction 26, follow A610 towards Nottingham for 2.5 miles. We are on the right hand side



7. PROGRAMME

The programme of the meeting will be:

Scrutineering will take place to the West of Hull, starting at 3:00 p.m. on Friday 1st April 2005 and closing at 9:30 p.m. Individual times for scrutineering and the exact location of scrutineering will be notified in Final Instructions (GR K6.1). Any competitor not signed on one hour before his start time may be excluded. First car will start from the Ramada Hull Hotel, Willerby at 8:01 a.m. and will finish at the Ramada Hull Hotel, Willerby at approximately 5 p.m. Results will be declared at the Ramada Hull Hotel, Willerby, where the awards presentation will also take place.

8. ROUTE

Cars will start at one minute intervals (GR K3.7) from the seeded list.

Ordnance Survey Map numbers 94, 100, 101, 106, and 107 (1:50,000 scale) will be required.

The event will contain about 6 special stages with a total mileage of approximately 45 stage miles. In addition, the road route will consist of approximately 175 road miles on classified and unclassified roads.

The special stages will be timed to an accuracy of less than one minute in accordance with GR K30.2.

The stages will take the form of forestry tracks. Stage and route information will be enclosed with Final Instructions.

The Official Notice Board will be located at Rally HQ at the Ramada Hull Hotel, Willerby (GR K3.14).

9. CLASSES

The event will consist of 12 classes as follows:

- N1) Group N up to and including 1400 cc
- N3) Group N over 1400 cc, up to and including 2000 cc
- N4) Group N over 2000 cc

- A5) Group A up to and including 1400 cc
- A6) Group A over 1400 cc, up to and including 1600 cc

All of the above classes are open to any vehicle currently in the General List of FIA homologated cars in Groups A or Group N, or formerly listed and now permitted to compete by the FIA/MSA.

- B9) Up to and including 1400 cc
- B10) Over 1400 cc, up to and including 1600 cc
- B11) Over 1600 cc, up to and including 2000 cc
- B12) Over 2000 cc, two wheel drive
- B13) Over 2000 cc, four wheel drive

Classes B9 to B13 are open to any vehicle complying with the 2005 MSA Technical Regulations.

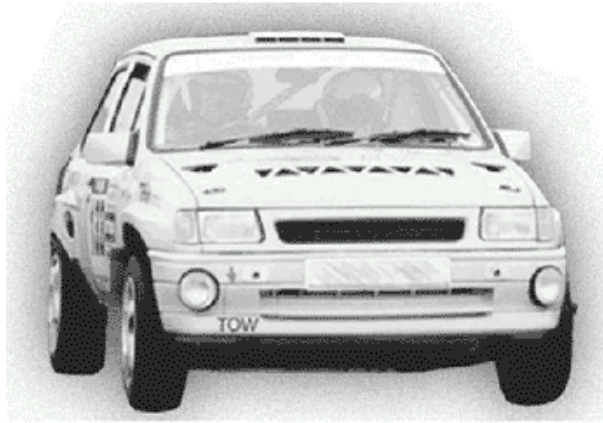
- H14) Historic and post-historic rally cars (registered on or before 31/12/1974) up to and including 1400 cc
- H15) Historic and post-historic rally cars (registered on or before 31/12/1974) over 1400 cc

All forced induction engines (other than diesels) are subject to an additional capacity ratio of 1:1.7. Vehicles with turbochargers must comply with 2005 restrictor regulations.

Cars will be seeded in two blocks with cars in classes **N1, A5, B9, and H14 leaving the start first**. Within each block cars will be seeded in order of anticipated performance. **Cars in the first block will carry competition numbers beginning at 201 and cars in the second block will carry competition numbers beginning at 1.**



Insurance for motorsport competitors



0115 941 5255

**www.competition-car-
insurance.co.uk**

competitioncarinsurance@thbgroup.com

THB Egger Lawson Limited, 72 Maid Marian Way, Nottingham NG1 6BJ
A member company of THB Group plc.
Member of the General Insurance Standards Council.

There will also be a Novice Crew Category, although all competitors will compete for the same class awards. Competitors will be deemed to be of "Expert Status", unless they indicate on their entry and awards eligibility forms their eligibility for the Novice Crew category. For the purpose of this rally, a novice will be defined as a crew of which the driver has not won an overall or class award on a previous NHMC Rally or any other National B or Restricted Status Rally whilst competing as a driver. Additionally, crews of which the driver has completed a National A (or National before 1993) or International Status Rally as a driver will be deemed to be Experts.

All vehicles must comply with MSA Technical Regulations. (GR E12, K37, Q, R2)

Limited slip differentials will be allowed. All cars competing in this rally must be taxed and insured for the public highway and must display a current tax disc applicable to that vehicle. (GR K37.9.1)

10. AWARDS

Awards will be made in the following order, (all named trophies will remain in the possession of the Organisers):

- | | | |
|----|--|-------------------|
| a) | 1st overall..... | Two Awards |
| b) | 2nd overall..... | Two Awards |
| c) | 3rd overall..... | Two Awards |
| d) | 1st in each class..... | Two Awards |
| e) | 2nd in each class..... | Two Awards |
| f) | 3rd in each class..... | Two Awards |
| g) | 1st Novice (not winning any of the above)..... | Two Awards |
| h) | 2nd Novice (not winning any of the above)..... | Two Awards |
| i) | Highest placed registered Silverstone Tyres Gold Star® Crew..... | Two BTRDA Goblets |
| j) | Highest placed registered Silverstone Tyres Silver Star® Crew..... | Two BTRDA Goblets |
| k) | Highest placed registered Silkolene 1400 Crew..... | Two BTRDA Goblets |
| l) | 1st Mixed Crew (subject to 5 entries)..... | Two Awards |
| m) | 1st All Lady Crew (subject to 5 entries)..... | Two Awards |
| n) | Highest placed registered Kent Cams ANCC Northern Stage Rally Championship Crew..... | An Award |
| o) | Team Award..... | An Award |

Teams of three cars may be specified at signing on or earlier to the Entries Secretary. A fee of £10 will be charged per team.

Additional awards may be specified in Final Instructions.

No competitor may win more than one award other than awards (i), (j), (k), (n), and (o).

All awards will be presented at the end of the event (subject to confirmation of the Final Results).

11. ENTRIES (Fees and Methods of Payment)

The entry opens and closes in accordance with the Rally Timetable. The entry fee is £340.00 plus £20 RalliTrak for entries received up to 19th March 2005 and £390 plus £20 RalliTrak for entries received after 19th March 2005. The entry fee includes **either** one service pack **or** one management pack per competing car. If the free pack is a service pack, a competitor may in addition buy **one** management pack for £20.00. Competitors who wish their free pack to be a management pack must indicate this on their entry form. Management packs (**maximum of one per competitor**) must be ordered before the closing date for entries.

The entry fee may be paid either in full or by instalments as detailed below. No entries will be reserved or accepted by telephone. Incomplete entry forms will not be accepted. Cheques, postal orders, etc must be made payable to 'North Humberside Forest Rally' and crossed. Post dated cheques and other like forms for deferring payment will not be accepted, except as detailed below.

Entries received after 19th March will not be seeded and will be allocated competition numbers after all entries received up to 19th March; they will start at an appropriate place in the starting order having regard to the drivers' past performance.

Methods of payment:

Scheme A Payment in Full to accompany entry form.

Scheme B Two Instalments:

- One cheque for £50.00,
- one cheque for the balance, post-dated for payment on or before 19th March 2005.
- Both cheques to accompany entry form.

All entries must be made on the official entry form and accompanied by the appropriate fee or made using the on-line entry form on the event's website. All entries will be acknowledged and all cheques, etc banked. The Organisers reserve the right to refuse any entry. The Entrant, Driver and Co-Driver will be deemed jointly and severally liable for the payment of all fees. All cheques must be cleared before a competitor may start.

The entry fee is based on Forestry Commission Charges, MSA and DOE fees, Start and Finish Venue costs and VAT rates as at 15th January 2005. Should any of these be increased before the event, the Organisers reserve the right to increase the entry fee appropriately or reduce the competitive forestry mileage. Any such increase will be collected at signing-on but will be publicised in advance if possible (GR E3.1.5).

The order of starting will be at the Organisers' discretion, but to assist seeding, entrants should note their previous results on the entry form.

12. ENTRIES SECRETARY

All entries should be sent to the Entries Secretary whose address is detailed under 'List of Officials' on page 2.

13. ENTRIES (Acceptance)

The maximum entry for the meeting is 180 (plus 20 reserves).

The minimum entry for the meeting is 120.

The maximum entry for each class is left open.

The minimum for each class is 10.

Should any of the above minimum figures not be reached the Organisers reserve the right either to cancel the meeting, amalgamate classes, or to reduce the stage mileage (GR E3.1.6).

80 entries will be reserved for Silverstone Competition Tyres BTRDA Rally Series registered contenders up to 18:00 on 12th March 2005; subject to this, written acceptance of entry will be sent on a first-come first-served basis to the first 150 entries received. Entries received after this will be acknowledged and held until after the ending of reservations for Silverstone Competition Tyres BTRDA Rally Series contenders or until 19th March 2005. The organisers reserve the right to refuse an entry without giving a reason. **It is likely that the entry will fill up quickly and it is entirely up to the competitor to submit his completed entry in good time.**

The seeded list will be final and not subject to protest.

Entry Fees and other charges will be refunded in full to any entrant whose entry is not accepted or any entrant whose entry is **cancelled, in writing to the Entries Secretary**, on or before 19th March 2005. Entries cancelled in writing to the Entries Secretary between 19th March 2005 and 29th March 2005 will have a charge of up to £25 deducted (GR E3.3.5). Withdrawals and non starters who fail to comply with the above timetable may receive a partial refund at the Organisers' discretion.

Competitors are advised that information they provide will be stored in a computer retrieval system and may be used for organisational and publicity purposes.

14. OFFICIALS

Officials are listed on page 2 of these Supplementary Regulations.

15. RESULTS

Provisional results will be published as soon as possible following the end of the event, subject to Official Delays (GR B13.1(b)), and will be displayed on the Official Notice Board in Rally HQ. The results service is being provided by Tynemouth Computer Services.

16. PROTESTS

Any protest must be lodged in accordance with GR O5.

17. SCRUTINEERING, DOCUMENTATION AND SIGNING ON (SEE ALSO SR7)

It is the responsibility of the entrants when presenting their cars for scrutiny to ensure compliance with the Road Traffic

Act, Construction and Use Regulations, and MSA Technical Regulations (in particular Q and R). In addition to the above, the vehicles will be checked for general road-worthiness, suitability, eligibility and noise level. Persons accompanying vehicles at scrutineering will be deemed to have full knowledge of the vehicle and its eligibility for the event and class entered.

Competitors' attention is drawn to the regulations on overalls (GR Q9) and crash helmets (GR Q10).

Petrol will **NOT** be available at the scrutineering venue.

Competitors competing in classes N1, N3, N4, A5, and A6 must carry either Group A or BOTH Group A and Group N Homologation papers (as appropriate) for their car; these papers must be presented at scrutineering and at any other time during the event upon demand.

Competitors should note that specific checks will be made in respect of the following points:-

- a) An MSA Log Book (GR K25.2),
- b) A Current Taxation disc (GR K37.9.1),
- c) In the case of a vehicle over 3 years old a current MOT certificate (GR K37.9.1),
- d) A fire extinguisher system in compliance with GR Q3,
- e) Roll over cage complying with GR Q1,
- f) Windscreen of laminated type (GR K37.9.3),
- g) An emergency red warning triangle (GR K37.8.8),
- h) A mechanical hand brake in compliance with Road Traffic Act Regulations.

N.B. Vehicles bearing a cherished registration number or vehicles whose registration prefix letter could mean the vehicle is over 3 years of age should produce the Vehicle Registration Document and if necessary a current MOT certificate.

Competitors' attention is drawn to the MSA tyre regulations (GR R2).

The noise test will be carried out in accordance with GR E12.17 (specifically E12.17.8 Section C (100dba at 0.5 metres)). A further noise check or checks may be made during the course of the event. Competitors exceeding the noise limit at any of these checks may be refused permission to start, refused permission to continue or excluded, as appropriate (GR K5.1.3).

Competitors wishing to carry a video camera in the car must apply in writing to the Entries Secretaries for authorisation (E 12.19.5). If authorised, a letter of authorisation will be issued which must be presented to the Chief Scrutineer who will inspect the camera fitting (K 37.9.9).

Entrants will be issued with a Road Book, Route Card and Time Cards at least one hour before his/her start time. The supplementary information for special stages will take the form of tulip diagrams. The road book will provide all the information necessary to enable competitors to comply with GR K32.1 and GR K3.3.1.

Competitors may be required to make up lateness at rest halts.

Should any changes take place on special stages which may be at variance with the tulip diagram issued, then the correct route will be deemed to be that designated by the stage arrowing (GR K25.9). The onus is on the competitor to follow the stage arrowing correctly and no protests will be allowed on this point (GR K26.1).

18. CONTROLS AND TIMING

This is a Target Timing Event. Crews must present themselves with their cars at all controls. All clocks will be set to BBC time. Special stage timing will be by digital clocks operated by marshals under the control of the MSA Timekeeper. All stages will have a bogey time indicated in the road book. Competitors are reminded that they must be ready to start a special stage when required to do so by the start marshal.

It is the competitor's responsibility to ensure that his times are correctly recorded on his time card and that the time card is handed in when and where instructed (GR K26.3.3).

The Rally will be divided into Road Sections and Special Stages. All controls other than Passage Controls (PCs) and Route Checks will be Time Controls (TCs). Each Road Section will be allocated a Target Time based on approximately 28 mph average or less (the target average speed, which may differ for different Road Sections) and a competitor can calculate his Due Time of arrival at any TC by adding this Target Time to his actual time of departing from the preceding TC.

On Short Road Sections following a Special Stage, three or four minutes extra will be allowed over the time calculated from the target average speed to account for any delays at the Special Stage Finish.

Competitors will receive penalties and accumulate lateness on Road Sections as follows:

- | | | |
|------|--------------------|---|
| i) | Under Target Time. | Penalty: 1 minute per minute under target Time.
Additional Lateness: zero. |
| ii) | Target Time. | Penalty: zero.
Additional Lateness: zero. |
| iii) | Over Target Time. | Penalty: zero.
Additional Lateness: 1 minute per minute over Target Time. |

All Special Stages will have a Bogey Time set at 65 mph (or 75 mph if the stage is entirely on a sealed surface), and a Target Time set at approximately 30 mph (or less on short stages).

Competitors will receive penalties and accumulate lateness on Special Stages as follows:

- | | | |
|------|-------------------------------------|---|
| i) | Under Bogey Time. | Penalty: Bogey Time.
Additional Lateness: Zero. |
| ii) | Between Bogey Time and Target Time. | Penalty: Actual time taken.
Additional Lateness: Zero. |
| iii) | Over Target Time. | Penalty: Target Time.
Additional Lateness: 1 minute per minute over Target Time. |

Lateness lost on Road Sections and Special Stages is cumulative and once lost cannot be regained. When a competitor's accumulated lateness calculated from the previous Main Control exceeds the permitted maximum of 20 minutes, that competitor will be excluded. Should any recorded times not be legible or not appear authentic, the Organisers may use any means at their disposal to establish a time (GR K26.3.4).

At all controls (other than stage finishes) a competitor who is early may wait for his Due Time outside the Control Area (GR K29.3).

The following titles shall describe the various types of controls:

Time Control (TC)

A Time Control may be situated at any specified point.

Main Control (MC)

Main Controls will be situated at the Start and Finish of the Rally, immediately before and after any Rest Halt, or at any other specified point. At an MC after a Rest Halt, competitors will restart at one minute intervals, either in original start order, or in the order in which they passed through a control prior to the halt. The method to be used will be notified in an official instruction and, if the order of passing through a control prior to a halt is to be used, the control will be specified in an official instruction. Each competitor will be given a due starting time from any MC and the difference between this and the actual starting time will be counted towards exclusion for overall lateness. Also a time penalty will be applied. Competitors not excluded by reason of having accumulated more than the maximum permitted lateness will restart (subject to the provisions above) from any MC with zero lateness, i.e. lateness is only accumulated between two adjacent MCs.

At the last Main Control of the rally competitors are allowed to check in advance of their due time using the procedure in K 29.3.3.

Regrouping Control (RC)

A Regrouping Control may be situated at any specified point. Competitors will restart from the RC at one minute intervals in the order of their arrival at the TC immediately preceding the RC. Each competitor will be given a due starting time from an RC and the difference between this time and his actual starting time will be counted towards exclusion for overall lateness. Accumulated lateness cannot be reduced at an RC (that is, accumulated lateness is NOT reset to zero at an RC).

Special Stage Arrival Control (SSA)

On arrival at an SSA a competitor will receive an arrival time. At the SSA a competitor will be given a provisional start time for the stage in hours and minutes, a minimum of 3 minutes after the arrival time. The competitor must then proceed immediately to the start line. Once a competitor has been allocated a provisional start time, the start marshal will assume the competitor is ready to start the stage. A maximum of 5 minutes will be allowed to change a flat tyre (GR K30.4(k)).

Special Stage Start Control (SSS)

(GR K25.12) The starting signal for Special stages will be **either** a set of traffic lights driven automatically from the start clock **or** a flag.

For stages using a flag as the starting signal, the starting procedure will be: the start marshal will inform the competitor at 30 seconds to go, 15 seconds, 10 seconds and at 5 seconds will hold a flag ahead of the driver. He will raise the flag at zero. The raising of the flag will be the signal to start.

For stages using traffic lights, the starting procedure will be:

- there will be no verbal countdown,
 - at 15 seconds before start time a red light will be shown,
 - at 10 seconds before start time an amber light will be shown,
 - at 5 seconds before start time, the red light will go off, and the 5 sectors of the amber light will turn off at 4, 3, 2, 1 seconds before start time,
 - at the start time the final sector of the amber light will turn off and a green light will be shown.
- The switching on of the green light will be the visual signal to start.

As each section is timed separately, the time taken from SSA to SSS is 'dead time' and delays are automatically allowed for. The area between the beginning of the SSA Control Area and the Stage Start will be 'Parc Ferme'.

Special Stage Finish Control (SSF)

At the SSF the competitor will receive a finish time in hours, minutes and seconds. This time, in hours and minutes, will be the start time for the following Road Section. Any competitor who fails to stop at the 'Stop' line must not, under pain of exclusion, reverse to the stop line, but must return on foot (GR K25.9.1, K31(p)).

Service Area (SV)

All service areas will have 'IN' and 'OUT' Time Controls and a target time will be specified between these controls. The section between SV 'IN' and SV 'OUT' will be marked as a road section.

Passage Control (PC)

At certain points indicated in the Road Book the Organisers may establish PCs in order to collect time cards from competitors or for other purposes. There will be no official times recorded at these controls, but a competitor failing to provide the necessary documents at any PC will be deemed not to have visited that control.

19. IDENTIFICATION

Up to 1400 cc competitors will be identified by competition numbers starting at 201; **all other** competitors will be identified by competition numbers starting at 1. The Organisers **will issue** rally plates to be fixed to the front and rear of the vehicle. In addition, competitors must display any advertising material specified by the Organisers on both front doors of the car. Rally plates relating to previous events must be removed prior to scrutineering. Competitors are reminded that these identification markings must be kept clean and legible throughout the event and must be removed or covered after the event or upon retirement (GR K10.1).

FULL COLOUR MAP BOOKS

NORTH HUMBERSIDE *Forest Rally*

2nd April 2005

Competitors may purchase, direct from Pine Lodge Maps, mapbooks with A3/A4 pages of 1:50,000 Landranger maps showing Rally Car Route, Service Areas, Special Stages, Passage Controls, all Main and Time Controls, Start & Finish Locations etc., A4 pages of 1:25,000 Explorer maps showing Special Stages in full detail, and a Service Van Overview Map - Ordnance Survey approved and authorised

Competitor Mapbook
(1:50,000 & 1:25,000 Maps)

Management Mapbook
(1:50,000 Maps)

Service Van Overview Map

Maps must be ordered in advance by Friday, 25th March 2005

(Prices upon application)

Pine Lodge Maps
1 Chequer Grove, Tranmere, Birkenhead, Wirral, CH42 0LB
e-mail: andy@pinelodgemaps.co.uk

Tel: 0151 647 5055 - Fax: 0151 647 0079

All major cards accepted



20. SUMMARY OF PENALTIES

See GR K31 which is amended as follows:

- r) Failure to follow the instructions of an official 10 minutes
- s) Further breaches of b), c), d), e), k), l), m), or n).....Exclusion
- t) Repeated misbehaviour of service crewExclusion
- v) Misuse of SOS and/or OK boards Report to MSA
- w) Unauthorised testing or practising..... Start refused - no refund of entry fee - report to MSA
- x) Causing an obstructionExclusion

21.GENERAL REGULATIONS

All other General Regulations of the MSA apply as written except for the following which are modified:

- GR E7.1.3 Competitors may be members of more than one team. (SR10)
- GR K9.1.3 Only the first named driver may drive during the event.
- GR K24.2.8 For the purposes of determining the notional time to be given to a crew who has not been able to cover a stage in the normal manner due to the running of a Special Stage being stopped, the two categories of vehicles in the rally will be treated as separate events.
The notional time for competitors in Classes N1, A5, B9, and H14 will correspond to the slowest time set by a competitor in these classes, up to the moment of interruption.
The notional time for competitors in Classes N3, N4, A6, B10, B11, B12, and H15 will correspond to the slowest time set by a competitor in these classes, up to the moment of interruption.
If, in the case of either category, it appears that the slowest time represents a complete anomaly, the next slowest time may be retained (and so on until the 5th slowest time).
However, no crew which is totally or partially responsible for stopping a stage may benefit from this measure. If they finish the stage they will be given the time which they actually set even if this is greater than the time awarded to other crews.
- GR K25.13 Subjective Route Notes from Patterson Pacenotes are permitted on this event, see SR 23.
- GR K34.1 Servicing will only be permitted in accordance with SR24. No other servicing is allowed and Judges of Fact will be appointed to enforce this. To assist competitors, a service schedule will be issued with Final Instructions.
- GR K34.1.1

22.MEDICAL ASSISTANCE/SAFETY

(K 25.5 was changed during 2004) All vehicles must carry an A4 size white board with a red SOS on one side and black OK on the other. Letters to a minimum of 12 cm high with a minimum stroke width of 1.5 cm.

In the case of an accident where urgent medical attention is required, where possible the red "SOS" board should be immediately displayed to the following cars and to any helicopter attempting to assist. Any crew which has the Red "SOS" board displayed to them or sees a car which has sustained a major accident where both crew members are seen inside the car but are not displaying the red "SOS" board, shall **immediately and without exception stop** to render assistance.

All following cars shall also stop. The second car at the scene shall proceed to inform the next radio point. (The competitor's RalliTrak hand-held emergency radio may also be used to alert the stage safety services immediately.) Subsequent cars shall leave a clear route for emergency vehicles.

The Clerk of the Course, at his discretion, may award a notional time to any competitor(s) delayed by making such a report. Any crew which is able to but fails to comply with the rule will be reported to the Clerk of the Course who may impose penalties.

In the case of an accident where medical intervention is not required, the "OK" board must be clearly shown by a crew member to the following vehicles and to any helicopter attempting to assist. If the crew leave the vehicle, the "OK" board must be displayed so that it is clearly visible to other competitors. Any competitor seeing an OK board displayed must report the fact to the stage stop line marshals.

Each competing car must carry a reflective triangle which, in the event of the car stopping in a special stage, must be placed in a conspicuous position by a member of the crew at least 50 metres before the car's position, in order to warn following drivers. Any crews failing to comply may be subject to a penalty at the discretion of the Clerk of the Course. This triangle must be placed even if the stopped car is off the road.



Wold Construction
**North HumberSide
 Forest Rally**
 2nd April 2005

FR /_{Jump} 80 ! ML → KR + Ć

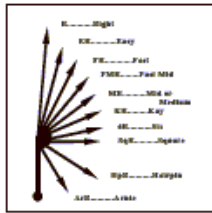
Fast Right over Jump 80 (yds) Caution Medium Left into Kay Right and Flat Crest

2R /_{Jump} 80 ! 4L → 5R + Ć

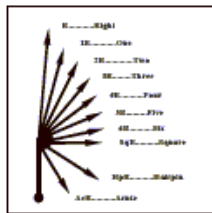
Two Right over Jump 80 (yds) Caution Four Left into Five Right and Flat Crest

These notes are designed to describe the road ahead, for a wide cross section of drivers and cars. They are not speed related, and must be interpreted according to road width, surface and conditions.

Bend Indication



Type A - Descriptive



Type B - Numbers



Type C - Six Fastest

1-9, 6 Fastest No 1st, Direction 1st etc. also available

NOTES AND SAFETY VIDEO/DVD AVAILABLE DIRECTLY FROM
 PATTERSON PACENOTES - MAIL ORDER ONLY

CONTACT US AT:
 BRIAN & LIZ PATTERSON
 Telephone 028 90844111
 Fax 028 90849231
 e-mail. PATTPACE@aol.com
 Or notes@rallynews.net
 Or Order On-Line at
 www.rallynews.net

ALL MAJOR CREDIT
 AND DEBIT CARDS
 ACCEPTED



Any crew retiring from a rally must report such retirement to the organisers as soon as possible, save in a case of force majeure. Any crew failing to comply will be subject to a penalty at the Clerk of the Course's discretion. Competitors who misuse the "SOS" or "OK" board will be penalised and may be reported to the MSA for further penalty.

23.PACE NOTES AND SUBJECTIVE ROUTE NOTES

Subjective Route Notes for this event will be available from Patterson Pacenotes (Brian and Liz Patterson). It is the competitor's responsibility to order and pay for their notes direct from Patterson Pacenotes as the event organisers will not be involved in this process in any way. Please see the Patterson Pacenotes advert in these Regulations for further details.

No other route notes are authorised for use on this event, and if found will be penalised in accordance with K25.13. This does not however preclude competitors from making notations thereon to suit their individual purposes or to transfer information provided by the organisers (i.e. logging and safety information) on to the notes. In all instances competitors are advised that the organisers accept no liability or responsibility for the use of the Subjective Route Notes.

Competitors may also use 1:50,000 or 1:25,000 Ordnance Survey maps on which they may mark the route, any information provided by the Organisers, or information from Patterson Pacenotes subjective route notes for this event.

Reconnaissance is not allowed. From the date of publication of these Regulations, where it is established that a competitor or entrant, their agent, representative or any other person or persons connected with a competitor or entrant has caused, arranged, directed, or carried out reconnaissance, or inspected or noted, in any form the sections within the area covered by maps listed in these Regulations before competitors have covered the stages, they will be **excluded from the results or refused permission to start**, as appropriate to the case. All such occurrences will be reported to the MSA (GR K6.2). The only exception to this Regulation will be for persons who live on, or whose employment causes them to travel along, a road used on the event.

24.SERVICING

- 1.Servicing is defined as work carried out on the car by any person other than the competing crew, or the use of parts or tools not carried in the competing car. Two categories of support vehicle will be permitted: Service Vehicles and Management Vehicles (SR24.4). Any person travelling in a Service Vehicle is 'Service Crew'; any person travelling in a Management Vehicle is 'Management Personnel'.
- 2.All servicing work carried out and the carrying of fuel in Service Vehicles must comply with current Health and Safety Executive recommendations.
- 3.There will be Service Areas at strategic points where work may be carried out by the Service Crew or Management Personnel on the competing car. These will only be accessible to Competitors and Service/Management Vehicles bearing Official Plates.
No other areas may be used by Service Vehicles, which are required to follow a prescribed route to the Service Areas. All other areas will be Out of Bounds to Service Crews and vehicles.
- 4.Emergency Service will be permitted in designated areas at the end of some Special Stages, from Management Vehicles bearing the appropriate Management Plate. These plates may **only** be used on conventional saloon cars or their estate car/van derivatives, and, subject to approval by the Organisers, 4x4 off-road leisure vehicles and people carriers. **The use of 'Transit' type vans, panel vans, trailers and roof racks is not permitted.** These vehicles must follow the route specified by the Organisers in the Management Vehicle Pack, which will specify sections of the rally route which are Out of Bounds to Management Vehicles. Management packs will contain a copy of the Competitor's Road Book together with details of the management route defined by descriptive text and map extracts.
- 5.Competitors may work unassisted on their own cars in 'Non Service Areas' except:
 - i) within 100 metres of any control,
 - ii) between Special Stage Arrival and Special Stage Start controls, and
 - iii) in any *Parc Ferme*.

The only activity permitted in these areas is, with the permission of an event Official, to carry out the following work unassisted:

- (a) Replace a wheel with a flat tyre by a wheel and tyre carried in the competing car,
 (b) Clean lamp glasses, windscreen, windows, competition numbers, and vehicle registration numbers.
6. Service Crews and Management Personnel are subject to the same regulations as competitors regarding noise, bad driving manners, etc. Officials and Marshals have been instructed to note any infringements of these rules.
7. Competitors are responsible for ensuring that their Service Crews and Management Personnel understand and comply with these regulations and that their Service vehicle(s) and Management Vehicle(s) bear an Official Plate showing the Competitor's Rally Number. This plate **must be fixed** to the front of each Service or Management Vehicle and must be clearly visible at all times. Each service/management pack will contain only one Official Plate. The Competitor will be required to complete a Service/Management Vehicle Registration Form before the pack is issued. Transferring a plate to a vehicle which has not been registered is an offence, and may be penalised under K34.
8. A competitor receiving assistance contrary to these SRs will be penalised in accordance with K31(n) or (o). Any Competitor whose Service or Management Vehicle is observed in an Out of Bounds area will be penalised by Exclusion from the results.

25. DAMAGE DECLARATION

Competitors will be required to complete and sign a report declaring they have not been involved in any incident resulting in damage to private property or injury to persons or animals, or alternatively giving details of any such incident where damage or injury has occurred. Any information given will not incur a penalty but failure to hand in a duly completed form will mean Exclusion. Competitors who retire on a stage should give their completed damage declaration form to the first Course Closing Car. Other competitors who do not report to the Finish are required to forward the report to the Secretary of the Meeting within 48 hours of the event, unless they have been involved in an incident in which case details must be given to the Organisers that same day. Competitors failing to comply will be reported to the MSA and excluded (GR K35.4 and K31(p)). During the event, the Secretary of the Meeting may be contacted at Rally HQ whose telephone number will be given in Final Instructions.

26. JUDGES OF FACT

Under GR C11.2 and GR K24.2.11 the following facts will be judged by officials as specified:

Failure to comply with GR K25.9 & GR K25.9.2	All officials & stage marshals
False starts on a stage	All stage start marshals
Failure to comply with GR K25.9.1	All stage finish marshals
Unauthorised possession of pace notes	All officials & Judges of Fact named for that purpose
Unauthorised servicing	All officials & Judges of Fact named for that purpose
Unauthorised smoking	All officials & stage marshals
Excessive noise	Noise test marshals & Judges of Fact named for that purpose
Crash helmet, seat belt and overalls regulations	All officials & stage marshals
Misuse of SOS/OK cards	All officials & stage marshals
Depositing of litter	All officials & marshals

MSA Scrutineers are Judges of Fact in respect of Vehicle Eligibility (GR C11.3)

Your attention is drawn to the fact that it is the intention of the organisers strictly to enforce the MSA Requirements regarding advertising and noise (SR17). In particular, excessive noise and backfiring will be monitored very closely throughout the event. Judges of Fact and Driving Standards Observers will be appointed to report on sound levels. Excessive sound will include instantaneous occurrence of noise such as that produced by backfiring caused by anti-lag systems. The penalty for excessive sound may go as far as exclusion (GR K24.2.3). Competitors should pay particular heed to GR C11 and C12.2.

27. DRIVING STANDARDS OBSERVERS

Officials will be appointed to judge driving standards GR K24.2.12.

Driving Standards Observers will have the powers listed in GR K24.2.12 and they will have the power to instruct competitors to withdraw from the event (GR C13.3).

28. EVENT CANCELLATION

Should it be necessary to cancel the event due to legal requirements or other unforeseen circumstances, the exact amount of refund will be determined by the actual administration expenses incurred. The Organisers are not liable for any further consequential losses incurred by prospective competitors because of event cancellation (GR B16).

29.CANCELLATION OF STAGES

Should it be necessary to cancel a stage during the rally, or to delete a stage from the results of the event, only the stage penalties will be cancelled. Unless a competitor has received written instructions to the contrary and has signed to that effect, the cancelled stage must be traversed within the Target Time. A competitor who exceeds Target Time on such a stage will have the excess time debited to his accumulated lateness. Any competitor who does not have a time recorded at the start or finish of a cancelled stage will be excluded (GR K31(a)).

30.INSURANCE

The promoters have applied to Alexander Forbes (formerly Bradstock Insurance Group) for a Blanket Cover Note under the Alexander Forbes Motor Sports Club Scheme. This will provide competitors who need to use the Scheme with Third Party Cover necessary to meet RTA requirements on the Road Sections of the Event. The basic rate for the event (before any Loadings) will be £26.00.

New applicants wishing to use the Scheme must be able to comply with all points of the Alexander Forbes Declaration:

- a) Over 21 and held a full licence for at least six months,
- b) No more than one fault accident in the last three years,
- c) No more than a maximum of six speeding points on licence,
- d) No physical or mental disabilities,
- e) No other material facts.

If able to comply with all points above simply sign on the Signing-On Form for Insurance at Documentation - no Letter of Acceptance will be issued.

If unable to comply with any of the points above contact the Entries Secretary for a Declaration Form, complete the Declaration Form and forward either to the Entries Secretary or direct to Alexander Forbes prior to the Event, to allow sufficient time for a Letter of Acceptance to be issued. Fax copies are acceptable. (Address: Alexander Forbes, Hanover House, 30/32 Charlotte Street, Manchester, M1 4FD Tel: 0161 228 0721 Fax: 0161 236 0995.)

If you have an NES letter that has a loading then you must also complete the declaration.

Spaces have been left on the entry form for the Policy number, name and address of the vehicle's insurers for the period of the event, for those competitors not using Alexander Forbes Motor Sport Risk Services Insurance.

These spaces must be completed if applicable.

It is the competitor's responsibility to determine the suitability of any insurance that they are proposing to use for the event with particular reference to current personal and vehicle details.

31.ADDITIONAL INFORMATION

A)Service and management vehicles will not be permitted on live stages.

B)In common with all Silverstone Competition Tyres BTRDA Rally Series rounds, and as on this event since 2003, we shall be using the RalliTrak system of competitor tracking throughout the stages. RalliTrak uses a dedicated radio network operated by stage personnel who track each competitor through the Special Stages at approximately every 5 km. Each competitor will carry a RalliTrak 2-way radio, to be used in the event of accident or retirement. This radio, when operated, has an immediate link to the nearest operator who is in direct contact with the stage safety services. Full instructions for use of the RalliTrak radios, and penalties for mis-use, will be specified in Final Instructions or a Bulletin.

C)Special rates for accommodation have been negotiated with the Ramada Hull Hotel, Willerby. Three star accommodation will be at a rate of £73.00 per room for bed and breakfast in a twin or double room, £53.00 per room for a single room on Friday, and £67.50 per room for bed and breakfast in a twin or double room, £47.50 per room for a single room on Saturday. All accommodation bookings should be made on the enclosed booking form, and all communication should be with the Ramada Hull Hotel on the booking form.

D)MARSHALS REWARD SCHEME

In order to help generate support from marshals we are making provision for every marshal to receive a memento of the rally. We should very much appreciate your help in this important area, and we ask you to consider purchasing the "Smiley Stickers" either in advance (via the entry form) or on the day at

documentation.

You will be given one sticker for every £5 donated and these should be fixed to the co-driver's side of the windscreen so that the marshals can thank you personally for your generosity.

E)Writtle Photographic (Mark Writtle, Unit 13, Stanley Lane Industrial Estate, Bridgnorth, Shropshire, WV16 4SF, tel: 01746 767929, fax: 01746 762212, email sales@writtlephotographic.co.uk) will be attending the event as official photographer.

F)Mad Video (Ian Maddison, PO Box 81, Keelby, Grimsby, DN37 5SN, tel: 01469 561281, email ian@madvideo.demon.co.uk) will be attending the event as official video photographer.

32.ACKNOWLEDGEMENTS

The Organisers extend votes of thanks to:-

Wold Construction Company Ltd

The Ramada Hull Hotel, Willerby

IT@Spectrum Ltd

RallyDrive International Rally School

ARD - Specialists in Land Rovers

Andrew Apperley

Andrew Kellitt

Pickering Showground

Silverstone Competition Tyres

Silkolene

Holpak

Mintex

Competition Car Insurance

Forestry Commission

North York Moors Parks Authority

The North Yorkshire Police

The Humberside Police

Motor Sports Association

Tynemouth Computer Services

Pine Lodge Maps

The various championship organisers and sponsors

The RLO for North Yorkshire and Humberside

The FLO for North Yorkshire Moors Forests

Mercury Radio

Airwaves Radio Communications/RalliTrak

The Medical Staff

The Rescue and Recovery Units

The Marshals and other Officials

All Landowners on the route

33.NORTH HUMBERSIDE MOTOR CLUB

Throughout the year, North Humberside Motor Club Limited promotes stage rallies and autotests. NHMC is a member of three regional associations: ANCC, ANEMMC and EMAMC. We have a membership in excess of one hundred and fifty. We are keen to meet others interested in all aspects of motor sport as well as offering our help to other clubs with events they may be organising. Further details can be obtained from any of the officials listed in these regulations. The club's website is at <http://www.NorthHumbersideMotorClub.co.uk/>.

A membership application form is included in these regulations.

34.CHAMPIONSHIP CO-ORDINATORS

The Silverstone Competition Tyres BTRDA Rally Series Co-ordinators are Howard Wilcock, 18 Epperstone Road, Lowdham, Notts, NG14 7BU, telephone 0115 966 5176, fax 0115 966 5179, mobile 07769 676533, email howard@btrdarally.com, and Steve Gregg, 16 Moat Street, Bridgnorth, Shropshire, WV16 4EP, telephone 01746 765368, fax 07968 037465, mobile 07813 838149, email steve@btrdarally.com. The Championship Competitor Liaison Officer is Andy Bull, 27 Westgate, Arthur Place, Birmingham, B1 3DB, telephone 0121 233 1720, mobile 07711 656412, email: andy@btrdarally.com.

The Roadrunner Phoenix Awards ANEMMC Stage Rally Championship Co-ordinators is John Hickling, 18 Phillip Avenue, Nuthall, Nottingham, NG16 1EA, telephone 0115 938 4601, fax 0115 854 4269, mobile 07831 856537, email: john.hickling1@ntlworld.com.

The Kent Cams ANCC Northern Stage Rally Championship Co-ordinator is Mike Yates, 4 Royd Wells, Mirfield, West Yorkshire, telephone: 01924 489491, mobile 07767 603665, email: mike.yates4@virgin.net.

The Competition Car Insurance EMAMC Stage Rally Championship Co-ordinator is Tracy Wood, 12 Stirling Way, Skellingthorpe, Lincoln, LN6 5TN, telephone 01522 696355, email tracylwood@tiscali.co.uk.

Notes

NORTH HUMBERSIDE MOTOR CLUB LTD

MEMBERSHIP APPLICATION FORM

I/We hereby apply to join North Humberside Motor Club Ltd, a Company limited by guarantee and, if accepted, agree to abide by the Club Rules and Regulations, the Memorandum and Articles of Association and the elected committee.

Should this Application be accepted and, in the event of the Company being wound up, I/We hereby guarantee a sum not exceeding one pound each in accordance with the aforesaid Memorandum and Articles of Association.

Surname First names _____

Signature Date _____

In the case of joint membership spouse's :-

First names Signature _____

Address _____

Post Code _____

Telephone (Home) (Business) _____

I/We are interested in:-

Autotests YES/NO Rallies YES/NO

Membership to 31st December: Single £10.00 Joint £11.00

Please find enclosed £ for membership
P.O.s/Cheques to be made payable to:
North Humberside Motor Club Ltd

Please send this form, together with S.A.E. to:
A.P. Carvell, 20 Badgers Wood, Park Lane, Cottingham, East Yorkshire, HU16 5ST
Telephone (01482) 840756

Notes

Holpak PACKAGED PUMPSETS[®]

Holpak bespoke range of packaged pumpsets, pressure booster systems, fire hose reel, fuel oil transfer and pressurisation sets designed, manufactured and supplied internationally to specific customer requirements covering diverse applications including water and waste treatment, building services and industry.

HOLFELD PUMPS

The Leading Fluid Handling Specialists

Telephone 028 9267 7523, Facsimile 028 9266 0263

For the most demanding conditions choose the

Motorsport Lubricants That Perform...



Xcite Motorsport Supplies
Official Distributors of Fuchs Silkolene Motorsport Products

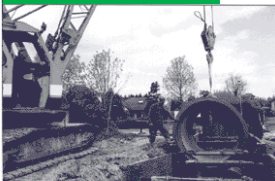
Tel: 0870 746 1635
Email: info@silkoleneoil.com
www.silkoleneoil.com

FUCHS
Silkolene
The Ultimate Range of Motorcycle Lubricants



Building a fine future...

The Wold Construction Company is geared to respond rapidly and efficiently to the needs of its clients, and to provide a professional and cost-effective service. The company takes a pride in its operational flexibility, and over the years has undertaken construction projects of every type, including:



- Highways
- Sewers
- Bridges
- Wharfs
- Pipelines
- Car Parks
- Commercial Premises
- Design and Construction Contracts
- Estate Roads
- Reinforced Concrete Structures
- Sea Defences
- Driven Piling
- Block Paving
- Industrial Premises
- Private Housing

Suite A, Wold House, Annie Reed Road, Grovehill, Beverley HU17 0LF
Tel:01482 861141 Fax:01482 861125